



HIGH QUALITY
INDOOR SPORTS
VINYL FLOORING SHEET

GLOBALFLOOR GLOBALFLOOR GLOBALFLOOR GLOBALFLOOR GLOBALFLOOR GLOBALFLOOR GLOBALFLOOR GLOBALFLOOR GL
LFLOOR GLOBALFLOOR GLOBALFLOOR GLOBALFLOOR GLOBALFLOOR GLOBALFLOOR GLOBALFLOOR GLOBALFLOOR GLOBALFL
GLOBALFLOOR GLOBALFLOOR GLOBALFLOOR GLOBALFLOOR GLOBALFLOOR GLOBALFLOOR GLOBALFLOOR GLOBALFLOOR GL
LFLOOR GLOBALFLOOR GLOBALFLOOR GLOBALFLOOR GLOBALFLOOR GLOBALFLOOR GLOBALFLOOR GLOBALFLOOR GLOBALFL
GLOBALFLOOR GLOBALFLOOR GLOBALFLOOR GLOBALFLOOR GLOBALFLOOR GLOBALFLOOR GLOBALFLOOR GLOBALFLOOR GL
LFLOOR GLOBALFLOOR GLOBALFLOOR GLOBALFLOOR GLOBALFLOOR GLOBALFLOOR GLOBALFLOOR GLOBALFLOOR GLOBALFL
GLOBALFLOOR GLOBALFLOOR GLOBALFLOOR GLOBALFLOOR GLOBALFLOOR GLOBALFLOOR GLOBALFLOOR GLOBALFLOOR GL
LFLOOR GLOBALFLOOR GLOBALFLOOR GLOBALFLOOR GLOBALFLOOR GLOBALFLOOR GLOBALFLOOR GLOBALFLOOR GLOBALFL

GL**BALFLOOR**

Globalflor® is registered in UK, owned by Shanghai Bomei Industrial Corporation Ltd, which is a Taiwan investment in China and managed by European technicians. We specializing in the production of vinyl flooring materials include homogeneous flooring, heterogeneous flooring, ESD flooring, sports flooring and different type of vinyl tiles. They have been widely used in areas such as Transport, Education, Healthcare, Commercial Buildings, Offices, Residences, Sports and other areas.

Products of high quality and fashionable, widely used in a variety of architecture, not only has the broad masses of the domestic market, but also been distributed to over 30 countries.

Our advanced machineries were imported from German and Japan. At the same time, over 500 legal staffs insist on providing dedicated international standard support with assistance on logistics, dedicated packaging and quality control for global customers. Till now, our monthly capacity can achieve 6,000,000 square meters.



We are committed to sustainable development and customer health protection.

Multi-purpose



GFS 88 202 Jewel



GFS 88 201 Jewel



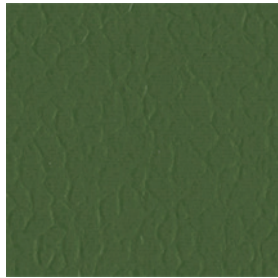
GFS 88 203 Jewel



GFS 88 101 Jewel



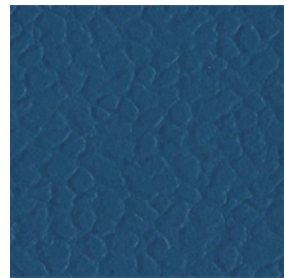
GFS 88 403 Jewel



GFS 88 401 Jewel



GFS 88 303 Jewel



GFS 88 301 Jewel



GFS 88 304 Jewel



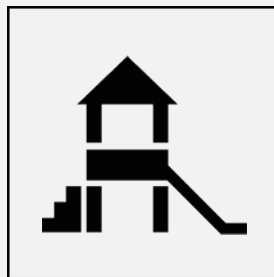
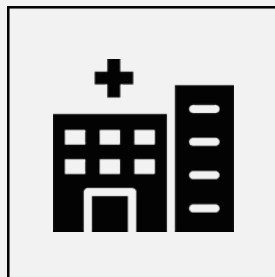
GFS 88 501 Jewel



GFS 88 604 Jewel



GFS 88 601 Jewel



Athletics



GFS 48 02 Sand



GFS 88 755 Sand



GFS 688 12W Wood



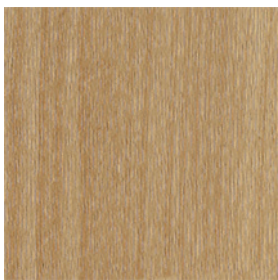
GFS 688 14W Wood



GFS 18 03 Sand



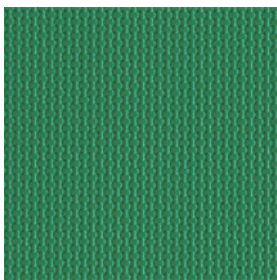
GFS 48 03 Sand



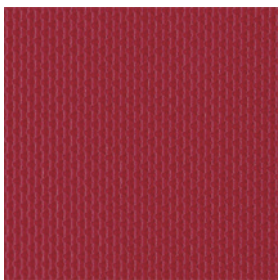
GFS 688 19W Wood



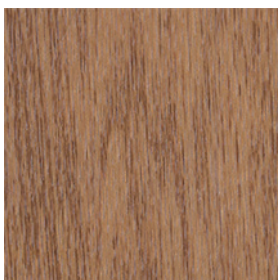
GFS 688 10W Wood



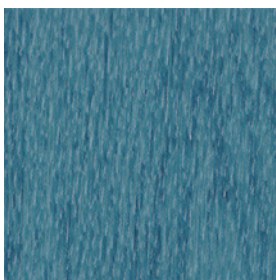
GFS 28 02 Grid



GFS 18 01 Grid



GFS 688 11W Wood



GFS 688 13W Wood





SPORTS
FLOORING
SHEET

9.0
MM

City Sports Hall
Competition Court
Basketball
Volleyball
Handball
Badminton

8.0
MM

Multi-sports
Basketball
Volleyball
Handball
Badminton

7.0
MM

Multi-sports
Basketball
Volleyball
Handball
Futsal
Badminton

6.5
MM

Multi-sports
Volleyball
Handball
Futsal
Table Tennis
Badminton

6.0
MM

Multi-sports
Volleyball
Handball
Futsal
Table Tennis
Badminton
Fitness

5.0
MM

Table Tennis
Fitness
Wellness Centres
Yoga
Tai Chi

4.5
MM







Fitness
Wellness Centres
Boxing

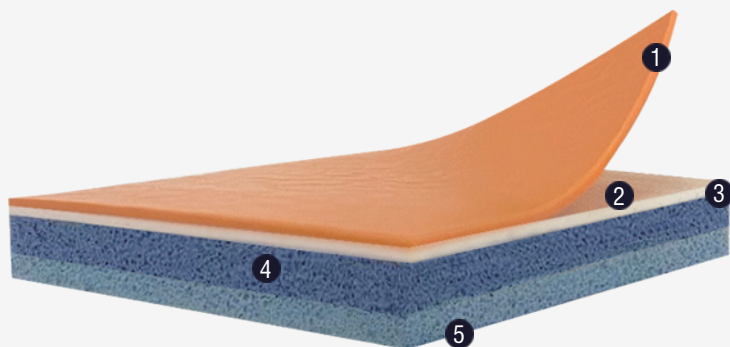
4.0
MM

Fitness
Wellness Centres
Boxing



TECHNICAL DATA

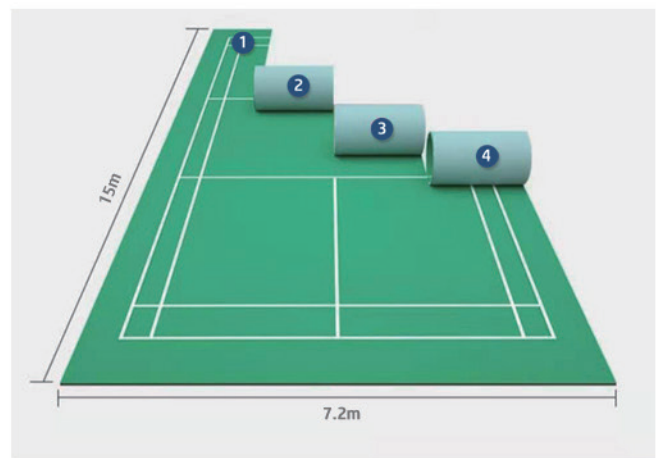
| | | | | | | | |
|------------------------------------------------------------------------------------------------------------------------|-----------|-----------|-----------|-----------|-----------|-----------|-----------|
|  Total Thickness EN 428 | 4.0mm | 4.5mm | 6.0mm | 6.5mm | 7.0mm | 8.0mm | 9.0mm |
|  Wear Layer Thickness EN429 | 0.45mm | 0.6mm | 0.6mm | 0.6mm | 0.8mm | 0.8mm | 0.8mm |
| Roll Width EN 426 | 1.8m | 1.8m | 1.8m | 1.8m | 1.8m | 1.8m | 1.8m |
| Roll Length EN 427 | 15m | 15m | 15m | 15m | 15m | 15m | 15m |
|  Abrasion Resistance EN ISO 5470-1 | ≤350mg | ≤350mg | ≤350mg | ≤350mg | ≤350mg | ≤350mg | ≤350mg |
|  Fire Rating EN 13501 | Cfl-s1 | Cfl-s1 | Cfl-s1 | Cfl-s1 | Cfl-s1 | Cfl-s1 | Cfl-s1 |
| Impact Resistance EN 1517 | ≥8N/m | ≥8N/m | ≥8N/m | ≥8N/m | ≥8N/m | ≥8N/m | ≥8N/m |
|  Residual Indentation EN 433 | ≤0.5mm | ≤0.5mm | ≤0.5mm | ≤0.5mm | ≤0.5mm | ≤0.5mm | ≤0.5mm |
|  Sound Reduction EN ISO 717-2 | 20~30dB | 20~30dB | 20~30dB | 20~30dB | 20~30dB | 20~30dB | 20~30dB |
| Friction Coefficient DIN 18032 | 0.45~0.65 | 0.45~0.65 | 0.45~0.65 | 0.45~0.65 | 0.45~0.65 | 0.45~0.65 | 0.45~0.65 |
| Ball Bounce EN 12235 | ≥90% | ≥90% | ≥90% | ≥90% | ≥90% | ≥90% | ≥90% |
| Sliding Coefficient EN 13036-4 | 80~110 | 80~110 | 80~110 | 80~110 | 80~110 | 80~110 | 80~110 |
| Vertical Deformation EN 14309 | ≤2mm | ≤2mm | ≤2mm | ≤2mm | ≤2mm | ≤2mm | ≤2mm |
| Shock Absorption EN 14308 | ≥20% | ≥25% | ≥25% | ≥25% | ≥25% | ≥35% | ≥35% |



- ① Anti-scratch pure PVC wear layer
- ② High-density white color stable layer
- ③ Fiber-glass layer
- ④ Low foaming rate buffer layer
- ⑤ Hexagon designed backing layer

ABOUT SUPERFLEX

- 24 Colors
- Available thickness include 4.0mm , 4.5mm, 6.0mm, 6.5mm, 7.0mm, 8.0mm and 9.0mm
- Available wear layer thickness include 0.45mm, 0.6mm, 0.8mm
- Low foaming rate make the flooring with best shock absorption, which is higher than other brands based on same thickness. Brilliant vibration absorption to reduce sports injuries
- Both Professional type and Multi-purpose type available, suitable in different and wide sports applications
- The damp proof hexagon design of backing, with strong grip force prevent the flooring moving in daly use. Suitable for removable courts





Low VOC and other emissions



SGS International Standards Certified

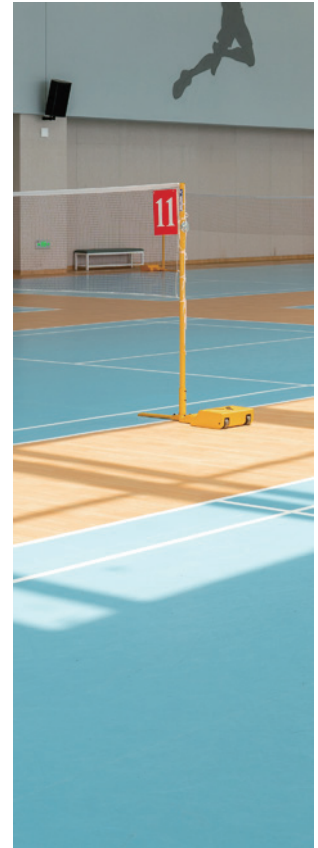


100% Recyclable



Products can pass CE authorization





**SHANGHAI BOMEI INDUSTRIAL CORPORATION LTD
GLOBALFLOR INTERNATIONAL CO., TLD**

No. 1106, Jinteng Road, Jinshan District, Shanghai 201500, China

0086 21 67666700

admin@bomeiflor.com

www.bomeiflor.com / www.gflors.com

Professional Vinyl Floor Manufacturer

Homogeneous Flooring | Heterogeneous Flooring | ESD Flooring | Sports Flooring
Rubber-plastic Flooring | LVT | SPC | Installation Accessories